



MARINA
Hotel

Leisure Programme
English



Contents

The Pfaffenwinkel and Starnberg Five Lakes District	1
Bernried	1
The Marina Resort and the Bernried Estate	2
Sports Activities, Excursions and Tips	3
Excursions and Points of Interest	9
Family and Children's Programme	16

The Pfaffenwinkel and Starnberg Five Lakes District

Bernried belongs both to the „Starnberg Five Lakes District“ and the „Pfaffenwinkel“. These two tourism regions offer an almost limitless range of attractions and leisure activities, which will guarantee a memorable and relaxing holiday.

Lake Starnberg gets a lot of public attention because of the rich and famous that live here. Few people know that until 1962 it was officially called „Wülmsee“. The Wülm is the river that flows from Starnberg towards the Amper and Isar. The connotation of crawling creatures („Wülm“ means „worms“) was not conducive to tourism and the nouveau-riche. Hence, the more attractive name „Lake Starnberg“ established itself amongst summer visitors and the in-crowd from Munich. Lake Starnberg is the largest of the five bodies of water that gave the region its name. The smaller lakes (Ammersee, Pilsensee, Wörthsee and Lake Wessling) are also well worth a visit.

The term „Pfaffenwinkel“ comes from the regions' clerical roots („Pfaffe“ means priest and „Winkel“ means corner). Even today religious buildings dominate the area. In this ecclesiastical district alone, there are dozens of monasteries and 158 churches! The best known are Andechs Monastery and the Wieskirche. Whether you explore this beautiful landscape by car, motorbike, on foot or on a bike, you will encounter the cheerful Bavarian mood that will be sure to make your trips a sheer delight.

Bernried

The village of Bernried was voted the most beautiful town in Germany in a government-sponsored competition in 2009. The selection committee based its decision on the fact that Bernried's 2,000 citizens knew how to preserve their traditions and combine them with modernity in a unique way. In our view, Bernried has made the most of the attractive location in the foothills of the Alps. We hope you will enjoy your stay here.

The Benedictine Monastery of Bernried, which was founded in 1121 by Count Otto von Valley and his wife Adelheid, shaped the history of the village. The now disproportionately large monastery church of St. Martin, which was built in the rococo style, and the stunning Hofmark Chapel hint at the former cultural and historical significance of the village. The churches are open to visitors all year around.

The location was also affected by the work of Wilhelmina Busch-Woods. The German-American millionaire - member of the Anheuser-Busch family, which operated the then largest brewery in the world in St. Louis - acquired the secular part of the monastery in 1914 and donated most of the estate to a charitable trust. The 80 hectare Bernried National Park, which formerly belonged to Wilhelmina, is classed as a national heritage. The park borders on the Marina Resort to the south and is the ideal place for a hike or a walk. Two famous long-distance trails, the King Ludwig Path and the Prelate's Path, pass through the park.

Bernried has lately strengthened its modern cultural appeal. In 2001 Lothar-Günther Buchheim, photographer, painter, filmmaker, publisher, writer (Das Boot) and important art collector, founded the „Museum of Imagination“. Let yourself be enchanted by its famous collection of expressionist paintings. The museum is a mere 200 metre away from the hotel. An account of Buchheim's eclectic life can also be found online (www.buchheimmuseum.de/lothar-guenther-buchheim).

The Marina Resort and the Bernried Estate

Dr. Lorenz Mayr acquired the plot on which the Marina Resort is situated in 1956. He received the grounds and surrounding fields in exchange for land in Munich, which the Bavarian government needed for the establishment of industrial enterprises after the Second World War. At the „Hofgut Bernried“ the agricultural scientist and passionate farmer specialized on the husbandry of „Allgäuer Braunvieh“ (Allgäu brown cattle). His varieties of this breed have won many awards and honours. The farm is still owned by the family and comprises 120 hectares of grassland, 60 hectares of arable land, 150 hectares of forest and a fishing pond. The stables, which are located above the hotel grounds, contain 100 dairy cows and 150 calves. Since 2014, the business is a hay milk farm with a milk yield of 8,300 kg per dairy cow.

When prices for farm goods started declining in the 1960s, the family was looking for new sources of income. Shortly after the relocation of the farm from Sendling to Bernried, Maria Mayr who came from the family of the Munich innkeeper Kaffler, opened up a restaurant on the lake. The „café at the strand“ (now Villa Marina) quickly became a well-known holiday destination for tourists from near and far.

In 1970, the pigs, which used to wallow along the lakefront, had to give way. Dr. Mayr received approval to build a floating marina with a sailing school, a restaurant and several apartment blocks for sailors on the former „Pig Meadow“. The resort has been expanded continuously, most recently in 2003 with a modern conference centre and additional hotel rooms. Currently the park-like hotel complex consists of six houses with 87 rooms. The Lakeside Restaurant Marina, with its two restaurants, lakeside terrace and beer garden will see to your culinary well-being. The nightclub „Saustall“ (meaning „pig sty“, a reference to its history) completes the range of touristic services. The harbour, which is situated in front of the restaurant, has about 300 berths.

Currently the family runs the hotel and the Bernried farm in the third generation. The agricultural ties provide additional value to hotel guests: Enjoy the homemade cheese and seasonal agricultural products from the „Hofgut Bernried“ in the restaurant. Of course, the game comes from our own hunt. A selection of regional products can be bought in our farm shop.

There's a lot to discover!

SPORTS ACTIVITIES, EXCURSIONS AND TIPS IN THE PFAFFENWINKEL AND STARNBERG FIVE LAKES DISTRICT

Fishing

Guest fishing permits can be obtained from local fisheries upon presenting a valid fishing license.

Fischerei Hubl
Bernried, An der Mühle 1
08158 1313 - www.hubl.org

Ballooning

Enjoy the unique panorama of the Five Lakes District and the Bavarian Alps from the air.

Balloonist Rudolf Klein in Tutzing (10 km by car)
08158 6997 - www.starnbergersee-ballonfahrten.de

Ballooning-Team Landstetten Starnberger See (20 km by car)
08151 9104 - www.landstettener-ballonfahrten.de

Ballooning-Team Ammersee (40 km by car)
08143 444551 - www.ballon-team-ammersee.de

Ballooning-Team Auerberg near Landsberg am Lech (45 km by car)
08243 9930645 or 0175 1717872 - www.ballonteam-auerberg.de

Cycling

Bicycle tours are particularly popular in the Five Lakes District and Pfaffenwinkel because they go well with other activities: beer gardens, swimming and the lush countryside. Countless cycling routes in the two regions are on offer for all ages. We have trekking bikes available in the hotel. The front office is happy to accept reservations. For bike accessories, special-purpose rental bikes (mountain bikes, electric bikes, child trailers etc.) and bike repairs, please contact:

Fahrrad Dillitzer (10km by car or bicycle delivery service)
Tutzing, Hauptstr. 68
08158 6247 - www.fahrrad-dillitzer.de

Cycling maps are available at the front office.

For a shorter introductory excursion (about 25 km), we recommend the tour „Oster Lakes and southern Lake Starnberg“:

www.bayregio.de/osterseen/radtour-osterseen

Other routes can be found at:

www.sta5.de/reisefuehrer/aktiv/radfahren/weitere-radtouren

Guided bicycle tours with Gerhard Schubert

Back country mountain bike itineraries in the Five Lakes District and the surrounding area for individual cyclists and groups of all ages and abilities.

0163 1721505 - www.radtouren-starnbergersee.de

Paragliding and Tandem Flights

Paragliding School Spieler (30 km by car)
08803 489555 - www.flugschule-spieler.de

Golfing

Ten of the finest golf courses in Upper Bavaria are close to our resort. We will gladly reserve starting times or an introductory session for you. Many golf clubs offer special green fee rates for hotel guests. Brochures are available at front office.

Tutzing (5 km by car)
Tel 08158 3600 - www.golfclub-tutzing.de

Feldafing (6 km by car)
08157 93340 - www.golfclub-feldafing.de

St. Eurach (8 km by car)
08801 1332 - www.eurach.de

Beuerberg (12 km by car)
08179 728 - www.golfclub-beuerberg.de

Hohenpähl (12 km by car)
08 808 92020 - www.gchp.de

Iffeldorf (13 km by car)
08856 92550 - www.golf-iffeldorf.de

Starnberg (22 km by car)
08151 12157 - www.gcstarnberg.de

Gut Rieden in Starnberg (23 km by car)
08151 90770 - www.gut-rieden.de

Bergkramer Hof - ecological golf course (30 km by car)
08171 41910 - www.gc-bergkramerhof.de

Riedhof in Egling (35 km by car)
08171 21950 - www.riedhof.de

Climbing & Bouldering

Climbing hall „under the Roof“ in Weilheim with more than 100 climbing routes suitable for adults and children.
0881 41122 - www.kletterhalle-weilheim.de

Nordic Walking

The Nordic Walking trail Bernried / Höhenried offers four tracks with varying levels of difficulty. Each course is equipped with a heart rate station.

Exact route description:
www.vital-parcours.de/park/park/aokparcours-bernriedhoehenried

Riding

Western Riding Stable Sylvia Seidl in Bernried
for children and adults
0170 4470047

Reitstall Pöcking Evelyn Herrmann (4 km by car)
Riding lessons for children and adults - including beginners.
0172 4471113 - www.reitstall-poecking.de

Pferdefreunde Fischen, Sirch Family in Pähl (13 km by car)
Riding lessons for children and adults - introductory courses, holiday
riding lessons for children and affordable packages.
08808 315 - www.pferdefreunde-fischen.com/reitunterricht

Iceland horses Dr. Christoph Brunner in Antdorf (15 km by car)
for adults and children – including beginners. Year-round fantastic rides
on Iceland ponies into the Ostersee area. On over 200 km of unpaved
trails you will discover charming locations, way off the beaten track.
0177 2133717 - www.islandpferde-am-ostersee.de

Swimming & Bathing

The water quality of the lakes in the Five Lakes District and the
Pfaffenwinkel is excellent. There are a variety of bathing options
available to you. The Marina Resort includes 500 metres of private
Starnberg lakeside with a bathing island only for our guests.
In bad weather, relax and enjoy our indoor pool, sauna and fitness
room. For our spa packages, please refer to the separate booklet.

We recommend the following water theme parks:

Wellenbad Penzberg (15 km by car)
08856 813440 - www.penzberg.de/wellenbad

Montemare Seesauna Tegernsee (60 km by car)
Steam and sauna baths - one on an old ferry - with stunning lake views.
08022 1874770 - www.monte-mare.de/tegernsee

Therme Erding (90 km by car)
The largest thermal bath in the world with 26 slides, a wave pool,
various deck areas and saunas.
08122 5500 - www.therme-erding.de

Water Sports

Every imaginable water sport is on offer in the Lake Starnberg area.

Boats

Hotel guests arriving by boat will receive a berth at our guest dock. Our harbourmaster will help with boat launching and recovery, ship repairs and marine supplies.

Stephan Fischer & the shipyard team
08158 6683 - www.bootswerft-fischer.de

Pedal and Rowing Boat Rental:

Fischerei Hubl
Bernried, An der Mühle 1
08158 1313 - www.hubl.org

Canoe and Kayak Rental:

Surf & Cat Centre St. Heinrich (10 km by car)
08801 915910 - www.surfschule-starnbergersee.de

Courses

Sailing & Motorboating:

Learn sailing and motor boating directly in our marina. There are also dedicated courses for children.

Segelschule Weiß-Blau, Sabine Haas
089 74879947 - www.weiss-blau.de

Stand-Up Paddling, Catamarans and Surfing:

Nordbad Tutzing, Claus Greif (6 km by car)
08158 6819 - www.nordbad.de

Watersports Centre St. Heinrich, Dariusz Wallusch (10 km by car)
08801 915910 - www.surfschule-starnbergersee.de

Water-skiing:

Waterski School Possenhofen, Simone & Gerhard Glas (18 km by car)
08157 1000 - wasserskischule@gmx.de

Squash

Hörmann Tennis-Squash Weilheim
0881 2804 - www.tennisquash.de

Tennis

TC Bernried
Bookings via our front office.

TC Tutzing (6 km by car)
08158 1245 - www.tctutzing.de

TC Seeshaupt (7 km by car)
08801 362 - www.tennis-seeshaupt.de

Hikes & Tours

Whether in stunning mountain scenery or along a river or lakeside – the Five Lakes District, Pfaffenwinkel and Werdenfels have well-marked trails of any length and difficulty. Being unafraid of heights, sure-footedness and alpine experience as well as appropriate equipment are essential when hillwalking. If the paths present a falling hazard, you should use climbing equipment. We will gladly put you in touch with a mountain guide.

Mountain Trails

Trail between Herzogstand and Heimgarten (40 km by car)

The peak of Herzogstand (950 m altitude) can be reached by foot or gondola. The ridge trail to the Heimgarten is especially rewarding. It requires surefootedness and good shoes.

08858 236 - www.herzogstandbahn.de

Partnachklamm (60 km by car)

The walk to and through the spectacular Partnach Gorge in Garmisch-Partenkirchen via the Eckbauer is a hike for the whole family.

Schachenhaus near Garmisch-Partenkirchen (60 km by car)

The mountain retreat of King Ludwig II. The tour can be combined perfectly with a hike through the Partnach gorge or - for the ambitious - a visit to the Meiler mountain hut.

www.schachenhaus.de

Hiking

Stiftungspark

The path through the Wilhelmina Busch Woods Foundation Park to Seeseiten and back is one of the most beautiful routes in Bernried (15 km - easy).

www.bernrieder-park.de

Castle Höhenried

You will follow the footsteps of the Wilhelmina Busch-Woods, the aforementioned „Dollar Queen from Lake Starnberg“ while walking through the parks of Höhenried Castle, now a non-profit sanatorium, to Unterzeismering (10 km - easy).

Ilkahöhe (5 km by car)

A beautiful mountain panorama awaits on the highest point west of Lake Starnberg with an altitude of 726 metres above sea level.

de.wikipedia.org/wiki/Ilkahöhe

Wintersports

We cannot guarantee White Christmases in the Five Lakes District. If it does snow, the following winter activities are close by:

Skiing

Zugspitze (70 km by car)

When it's already spring elsewhere, the Zugspitzplatt still has snow. Well known is the „Kandahar“, which is considered one of the most challenging runs among the World Cup races.
www.zugspitze.de

Ski Lift Beuerberg (15 km by car)

Most local kids learnt to ski on these beginner slopes, which are close by. Convenient, family-friendly and authentically Bavarian.
08171 26074 - www.skilift-beuerberg.de and
www.skischule-beuerberg.de

Toboggan

Wallenberg in Rottach-Egern (65 km by car)

One of the longest and most athletic toboggan runs in Germany.
08022 705370 - www.wallbergbahn.de



EXCURSIONS AND POINTS OF INTEREST

Steamer Cruises

Timetables are at www.seenschiffahrt.de/starnberger-see

It is worth taking a break in

Feldafing:

Explore the romantic royal retreat on Rose Island (Roseninsel).
www.roseninsel.org

Leoni:

Commemorate Ludwig II in the votive chapel (Votivkapelle).

Seeshaupt or Tutzing:

Take a walk to Bernried. The coastal path takes you through beautiful, unspoilt parklands.

Carriage Ride

The mayor of Bernried, Josef Steigenberger, will gladly drive you around on his horse-drawn carriage and tell you some of his „Bernried Anecdotes“.

08158 3465 - josef.steigenberger@web.de

Experience Nature

Zugspitze in Garmisch-Partenkirchen (70 km by car)

With 2962 metres above sea level it's the highest mountain in Germany. Weather permitting, you have a unique view of over 300 peaks in Austria, Italy and Switzerland.
www.zugspitze.de

Walchensee and the Hydroelectric Power Station's Visitor Centre (40 km by car)

08851 77-225 - www.walchensee.de

Alpenwelt Karwendel (70 km by car)

German-Austrian nature reserve for hiking, climbing and mountain biking. The Isar originates there.

www.karwendel.org

Castles, Monasteries & Churches

Bernried Monastery with St. Martin Church and Hofmark Chapel
www.bildungshaus-bernried.de

Andechs Monastery (20 km by car)

www.andechs.de

Benediktbeuren Monastery (30 km by car)

www.kloster-benediktbeuern.de

Ettal Monastery (50 km by car)

www.kloster-ettal.de

Neuschwanstein Castle (75 km by car)

www.neuschwanstein.de

Linderhof Castle (60 km by car)

www.schlosslinderhof.de

Wieskirche (55 km by car):

www.wieskirche.de

Tour Guide

If you are interested in a private church tour or a cultural and historical journey of discovery, the tour guides Elisabeth Welz, Edith Brey and Maria Sporer will gladly be of service.

0163 2183859 - elisabeth.welz@pfaffenwinkler-kulturfuehrer.de

Museums

Buchheim Museum of Imagination in Bernried

Expressionism and more. Tour of the museum on Saturdays, Sundays and bank holidays at 14:30. Especially interesting for children: the permanent exhibition „World of Circus“ and the „Family Room“, where parents and children can craft, paint and play.

08158 99700 - www.buchheimmuseum.de

Franz Marc Museum in Kochel am See (25 km by car)

Home to the expressionist group of artists known as „The Blue Rider“ (der Blaue Reiter), which was founded in 1905 in rejection of conservative art.

08851 924880 - www.franz-marc-museum.de

Castle Museum & Gabriele Münter House in Murnau (30 km by car)

08841 476207 - www.schlossmuseum-murnau.de

Penzberg Museum, Collection Heinrich Campendonk (15 km by car)

www.museum-penzberg.de

Cinemas & Concerts

During the summer months, a variety of open-air cinemas and music festivals capture the Bavarian outdoor spirit. If you're up for an evening out under the stars, you can collect information at the front desk.

Throughout the year, Hollywood blockbusters and arthouse films are shown at traditional cinemas in the region.

Kurtheater Tutzing (6 km by car)

08158 6380 - www.tutzing24.de/kurtheater

Trifhof Cinemas in Weilheim (20 km by car)

0881 417336 - www.kinowolf.de

Cinema Breitwand in Castle Seefeld, Starnberg, Herrsching (approximately 30 km by car for each)

www.breitwand.com

Regional Handicrafts

Chococult Clement in Bernried

Gaze through the chocolatier's shop windows and see the sweet delights being made by hand at the historic Bernried train station. Alternatively, become creative yourself and book a chocolate-making course.

08158 6310 - www.clement-chococult.de

Andechs Monastery (20 km by car)

Brewery tour on Tuesdays and Wednesdays.

08152 3760 - www.andechs.de

Murnau Coffee Roasting Facility (35 km by car)

Roast it yourself and enjoy - here you learn everything you need to know about coffee.

08841 4895033 - www.murnauer-kaffeeoesterei.com

Open Cheese Dairy Tegernseer Land (65 km by car)

Guided tours and tastings by appointment.

08022 1883520 - www.naturkaeserei.de

Distillery Lantenhammer in Hausham (70 km by car)

Gentian Distillery Experience.

08026 92480 - www.lantenhammer.de

Slyrs whisky distillery in Schliersee (75 km by car)

The only Bavarian whisky distillers.

08026 9222795 - www.slyrs.de

Pure Bavaria

Open-Air Museum Glentleiten (30 km by car)

Discover about 60 historic houses, workshops, mills and Alpine huts - includes family programmes.

08851 1850 - www.glentleiten.de

You can comfortably combine your excursion with a visit of

Gut Schwaiganger

State-owned horse farm - known for Bavarian cold bloods.

www.lfl.bayern.de/lvfz/schwaiganger

Murnau (35 km by car)

Like Bad Tölz, but much cozier. No wonder that the artist group „Blauer Reiter“ settled here (details under Museums and Monuments). Particularly the Murnau markets are a memorable experience.

www.murnau.de

Bad Tölz (40 km by car)

Home of the „Bulle von Tölz“ (a popular German television series).

Explore the pedestrian area with its traditional shops such as the Hatter Hillerbrand, the Tölzer Puppet Theatre and the Town Museum.

www.bad-toelz.de

Oberammergau (55 km by car)

This place is known for the Passion Play, wood crafting and its unique landscape. Easy to combine with a visit to Linderhof Castle and Ettal Monastery.

www.gemeinde-oberammergau.de

Aying (55 km by car)

The brewery, beer gardens and the town centre with the highest maypole in Europe are attractions for tourists from around the world. You will note that the village looks as authentically Bavarian as the labels of the Ayinger beers we serve. The Alpine Zoo Blindham is located nearby (see Zoos).

www.aying.de - www.bergtierpark.de

A Gaudi (Bavarian for fun)

Summer Toboggan Run on the Blomberg (40 km by car)

Sports and fun for the whole family - only in dry weather

www.blombergbahn.de

Bike Park & Bullcarting Lenggries (50 km by car)

Take the lift uphill, gravity helps to get back down - only in dry weather and suitable only for children of 12 years and up.

www.bullcarts.de www.bikepark-lenggries.com

Munich Highlights

A trip to the Bavarian metropolis is worthwhile in any weather.

City Tours

There are many variants - on foot, by bicycle or by tram (a Munich attitude to life).

www.stadtvogel.de

60 Museums

welcome you even on rainy days.

www.muenchen.de/sehenswuerdigkeiten/museen

Munich Castles

The former Residenz is the largest city palace in Germany. Here you can admire exhibits, state rooms and the treasury with the precious jewels of Bavarian kings and queens. A trip that is worthwhile for the whole family.

www.residenz-muenchen.de

Just as interesting is the Nymphenburg Palace with the Porcelain Museum and its most famous attraction - the „Gallery of Beauties“. The portraits, which Ludwig I commissioned, feature 36 beautiful Munich ladies and noblewomen.

A visit to this castle can easily be combined with a trip to the Botanical Garden, which adjoins the Nymphenburg Park.

www.muenchen.de/sehenswuerdigkeiten/burgen-schloesser





Visit of a Munich Beer Garden

Take a break in a beer garden, take a seat under a chestnut tree, order a 1 litre stein (Mass Bier) and witness the Bavarian way of life: Munich natives place their picnic basket on the table, spread out the tablecloth they brought along, put cushions on the benches and unpack their sandwiches. The innkeepers won't object to the "bring your own" mentality. If you wish to find out why this is so, we recommend that you read up on the history of the beer gardens:
en.wikipedia.org/wiki/Beer_garden

Well-known Munich Beer Gardens:

On a wonderful stroll through the English Garden, you can explore three of the most famous beer gardens.

Chinese Tower Beer Garden

In mid-July at 6am this is where the „Kocherlball“ takes place. In the 19th century this was a meeting of the employed service staff. Today it is the most visited folk dance event in Munich.
www.chinaturm.de

Hirschau Beer Garden

www.hirschau-muenchen.de

Aumeister Beer Garden

www.aumeister.de

More Attractions**Allianz Arena (65 km by car)**

Get to know the home of the FC Bayern and the TSV 1860 on a personal tour of the stadium.
089 69931222 - www.allianz-arena.de/de/arenatour

BMW World (60 km by car)

Immerse yourself in the world of motorsport.
089 125016001 - www.bmw-welt.com

Sea Life

In the nearby Olympic Park, you can dive into the world of fish and marine mammals. The large aquarium with 33 tanks will fascinate the entire family.
089 450000 - www.visitsealife.com/munchen

FAMILY AND CHILDREN'S PROGRAMME

Sailing lessons

Kids' sailing courses with one-man „Optimist“ dinghies take place regularly at the marina.

Sailing School Weiß-Blau

089 74879947 - www.weiss-blau.de

Zoos & Animals

Gut Aiderbichl in Iffeldorf (12 km by car)

Sanctuary for Animals. Guided tours and film screenings are every two hours.

08801 9156550 - www.gut-aiderbichl.com

Hellabrunn Zoo in Munich (55 km by car)

With more than 750 different species one of the most prestigious scientifically managed zoos in Europe.

www.hellabrunn.de

Alpine Zoo Blindham (55 km by car)

Domestic animals in wild animal enclosures, a petting zoo, an indoor and outdoor adventure playground.

08063 207638 - www.bergtierpark.de

Theme Parks

Fairy Tale Forest Wolfratshausen (25 km by car)

20 fairy tales with 260 moving figures. The stories are told at the touch of a button in German or English. Closed during rain, dogs are not allowed.

www.maerchenwald-isartal.de

Schongauer Fairy Tale Forest and Wildlife Park (40 km by car)

Rides, petting zoo and fairy tale landscapes. Closed during rain, dogs are not allowed.

08861 7527 - www.schongauer-maerchenwald.de

Bavaria Film City (55 km by car)

Tour of one of the largest film production sites in Europe. Movies are still being shot here on a daily basis. Learn more about film tricks through interactive exhibits and let yourself be enchanted in a 4D adventure cinema.

www.filmstadt.de

Allgäu Skyline Park in Bad Wörishofen (75 km by car)

50 attractions with the themes Pure Adrenalin, Family Hits, Love Whispering and Fun for Kids.

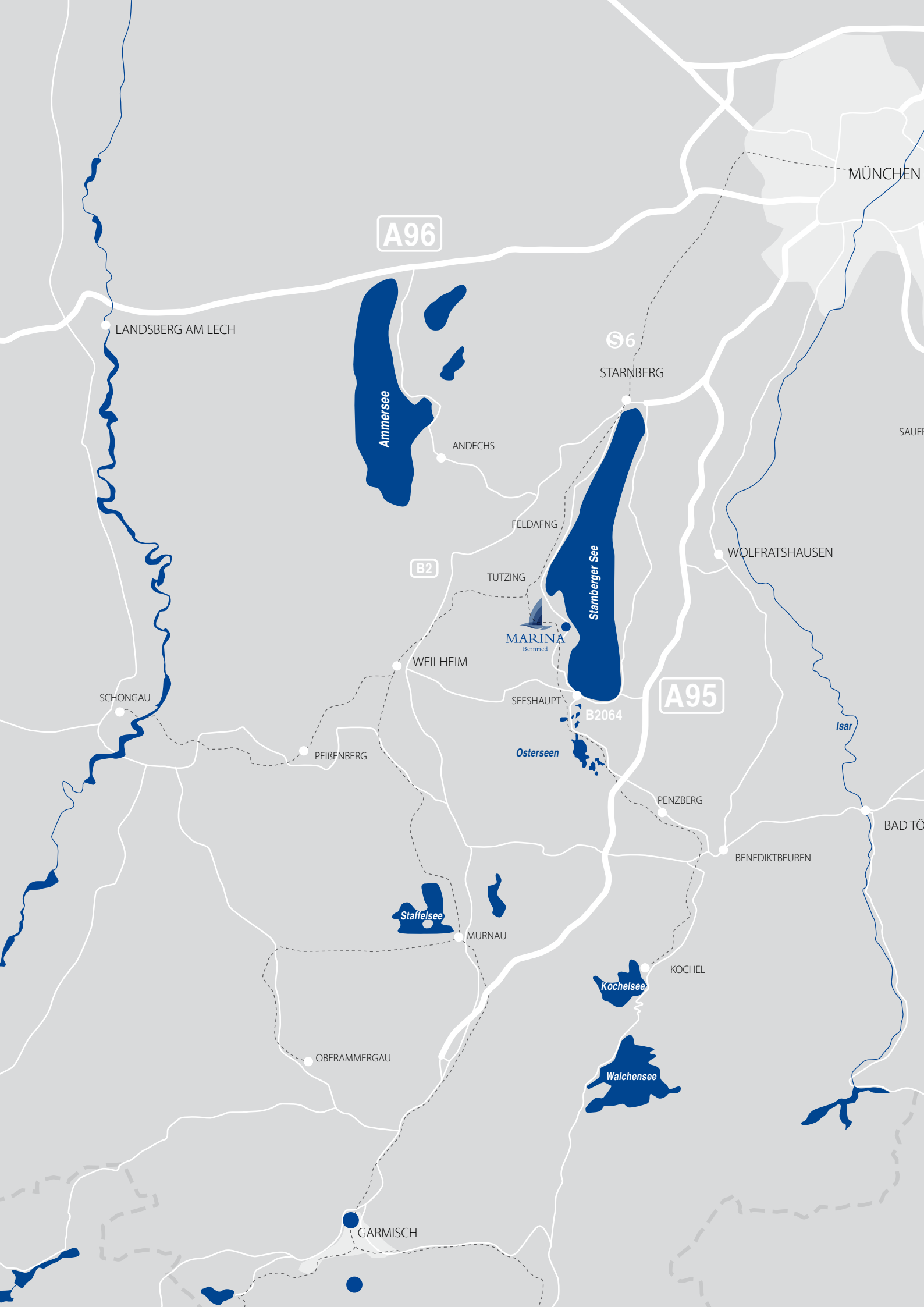
08245 96690 - www.skylinepark.de

Art

Puppet Theatre Bad Tölz (40 km by car)
08041 74176 - www.marionetten-toelz.de

Art for Children in Munich (55 km by car)
Courses and museum visits for children.
089 36108171 - www.kuki-muenchen.de

We do not assume any liability for the accuracy and completeness of the above information.



MÜNCHEN

A96

LANDSBERG AM LECH

Ammersee

ANDECHS

S6

STARNBERG

SAUER

FELDAFNG

B2

TUTZING

MARINA
Bernried

WEILHEIM

Starnberger See

WOLFRATSHAUSEN

SCHONGAU

SEESHAUPT

A95

PEIßENBERG

B2064

Osterseen

Isar

PENZBERG

BAD TÖ

Staffelsee

MURNAU

BENEDIKTBEUREN

OBERAMMERGAU

KOCHEL

Kochelsee

Walchensee

GARMISCH



EXCURSIONS & PLACES OF INTEREST

- 1 Brauerei Aying / Wildtierpark Blindham
Aying Brewery / Alpine Zoo Blindham
- 2 Stadtmuseum / Marionettentheater Bad Tölz
City Museum / Puppet Theatre Bad Tölz
- 3 Zugspitze
Zugspitze
- 4 Freilichtmuseum Glentleiten
Open-Air Museum Glentleiten
- 5 Gut Aiderbichl
Sanctuary for Animals
- 6 Kloster Andechs
Andechs Monastery
- 7 Kloster Benediktbeuren
Benediktbeuren Monastery
- 8 Oberammergau Passionsfestspiele / Kloster Ettal
Passion Plays Oberammergau / Ettal Monastery
- 9 Franz Marc Museum
Franz Marc Museum
- 10 Schloßmuseum / Gabriele-Münter-Haus / Murnauer Kaffeerösterei
Castle Museum / Gabriele Münter-House / Murnau Coffee Roasting Facility
- 11 Ausstellung Heinrich Campendonk, Stadtmuseum
Collection Heinrich Campendonk, City Museum
- 12 Roseninsel
Rose Island
- 13 Schloss Linderhof
Linderhof Castle
- 14 Schloss Neuschwanstein
Neuschwanstein Castle
- 15 Märchenwald und Tierpark Schongau
Fairy Tale Forest and Zoo Schongau
- 16 Montemare / Schaukäserei / Destillieren
Montemare / Open Cheese Dairy Tegernseer Land / Distilleries
- 17 Erlebniskraftwerk Walchensee
Hydroelectric Power Station's Visitor Centre
- 18 Märchenwald Wolfratshausen
Fairy Tale Forest Wolfratshausen

Marina Bernried GmbH
Am Yachthafen 1-15 • 82347 Bernried
Tel. +49 (0) 8158 9320



info@marina-bernried.de
<http://www.marina-bernried.de>
<http://www.facebook.com/marina.bernried>